



FENTON WHELAN

DEVELOPMENT MANAGEMENT

2021

Fenton Whelan Development Management



Thank you for your interest in Fenton Whelan development management services. Our team combines its collective experience and expertise to provide you with peace of mind and value creation at every stage of your development.

Our approach and experience gained on many complex and challenging developments will provide you with the confidence to progress your project, taking advantage of our long-standing relationships with Westminster City Council, Grosvenor Estate and Historic England.

We deliver the finest properties through exacting management from planning to building handover, with a continuous focus on value creation and highest possible quality.

Thank you,

FENTON WHELAN
Expert Formation
James Van Den Heule
Founder



Who We Are

Fenton Whelan's founders have decades of experience with planning and construction in central London. Our speciality is super high-end residential projects on listed buildings.

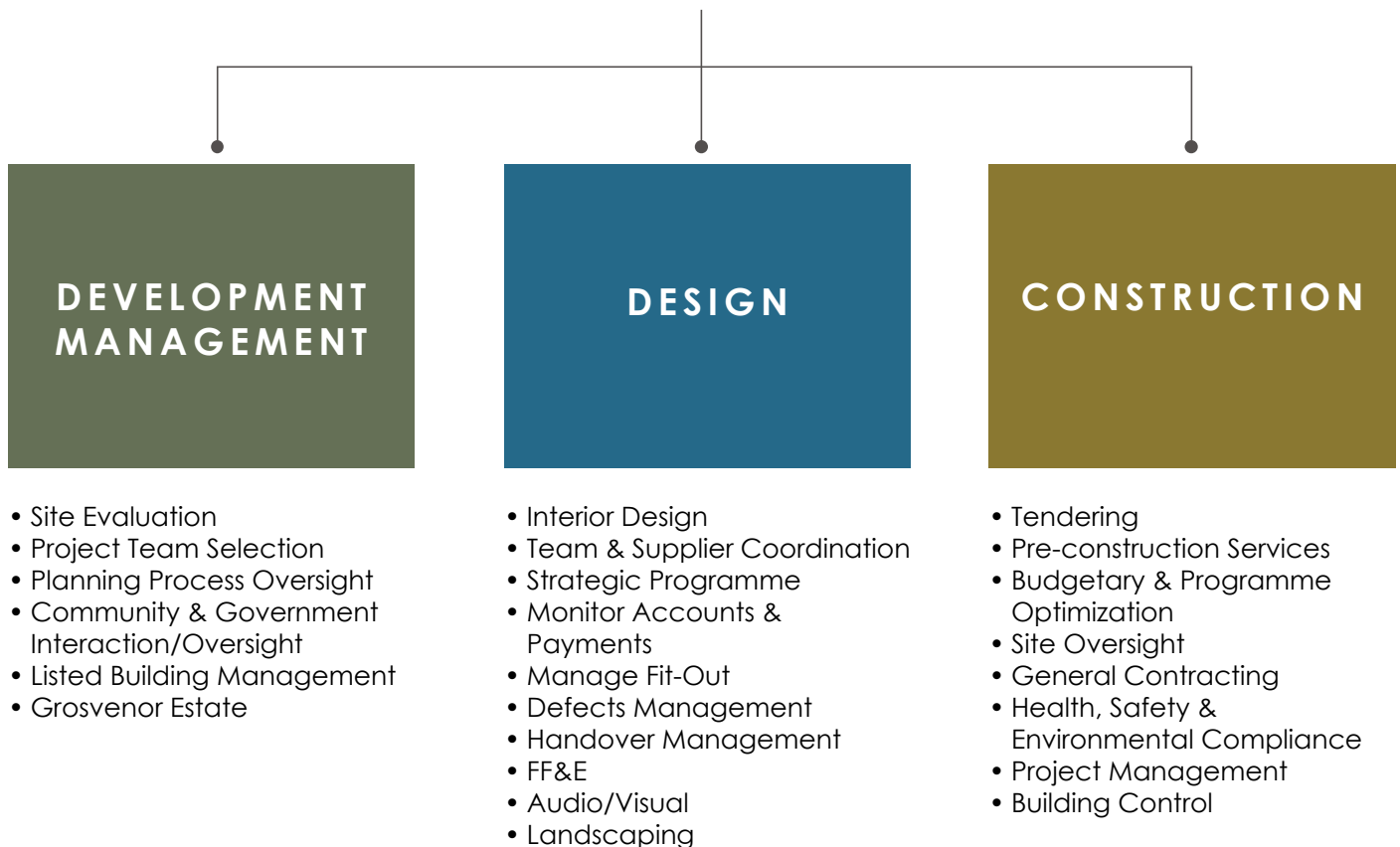
We have curated a team of highly experienced real estate specialists to inform and drive each stage of the development process, with over 100 years of combined experience and in excess of 50 completed developments, predominantly on the Grosvenor Estate within the City of Westminster.

Our expertise covers every aspect of the development process including assembly of professional teams, appraisals, planning, construction procurement, stakeholder management, construction management, design and building handover.

With the finest track record of assembling and leading design teams we will provide a strategic overview of the most optimum contractual structure.

What We Do

FENTON WHELAN



We facilitate world-class design and deliver rigorous development management and construction.

We work extensively with family offices and high net-worth private clients to provide well informed and financially solid advice to delivery luxurious residential properties.

Fenton Whelan has an unparalleled record of development management & marketing of some of central London's most prestigious projects. Our team is powered by a deep understanding of the prime Central London market.

Fenton Whelan's clients benefit from end-to-end development management and property advisory expertise to deliver value and programme efficiency.

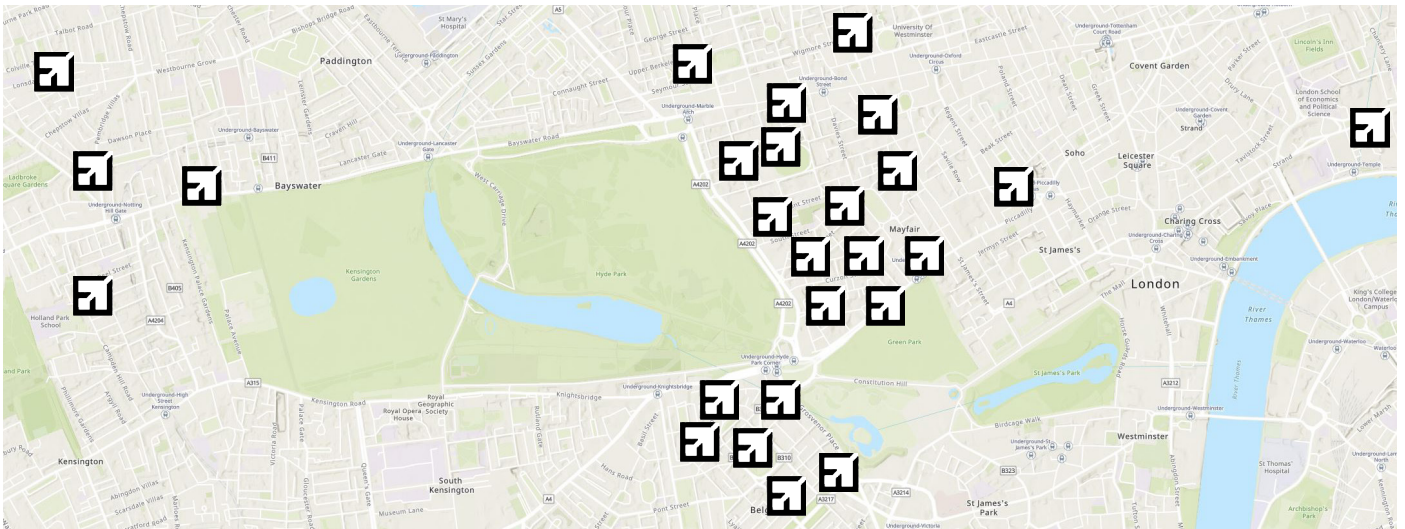
Central London Projects

FENTON WHELAN

25 Development
Professionals

50 Completed
Projects

£1.2 Billion
Development Pipeline



Fenton Whelan was founded in 2010 by Sanjay Sharma and James Van Den Heule

Over the past decade, the company has built a diverse team of in-house specialists driving every project stage from feasibility and planning to design development, valuation and marketing.

Over 50 completed projects including:

- 20+ listed buildings
- 30+ in the City of Westminster
- 20+ on the Grosvenor Estate, including a joint venture in Mayfair

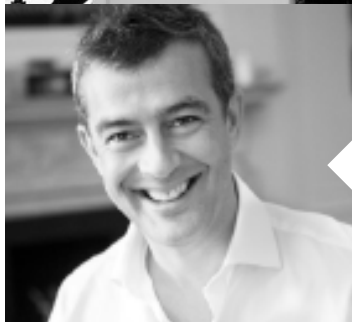
Key Projects:

- Park Modern, Hyde Park, 200,000 sqft, £500 million GDV
- Four Seasons Hotel, Trinity Square, 100 key, £100 million GDV
- Greybrook House, Mayfair, 14,000 sqft, £60 million GVD
- Eaton Place, Belgravia, 6,400 sqft, £23 million GVD
- Lonsdale, Notting Hill, 6,700 sqft, £15 million GDV
- Chester Street, Belgravia, 30,000 sqft, £50 million GDV
- 30 & 32 Chapel Street, Belgravia, 20,000 sqft, £40 million GDV



FENTON WHELAN

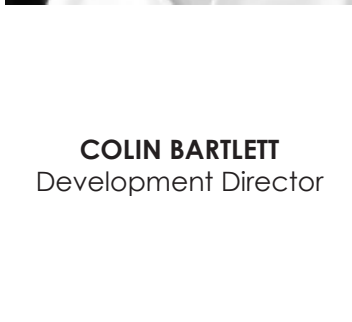
Professional Team



JAMES VAN DEN HEULE
Founder / Director



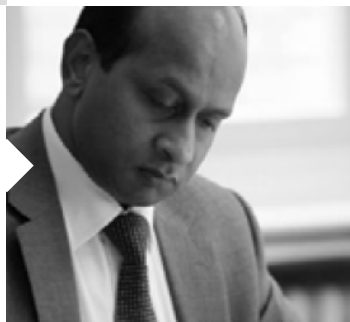
SANJAY SHARMA
Founder / Director



COLIN BARTLETT
Development Director



BAJEE GUNNOO
Finance Director



LARS CHRISTIAANSE
Sales/Marketing Director



BRIAN HIGGINS
Construction Director



JOHN-MARTIN DOUGLAS
Development Manager



WILLIAM WEBER
Development Associate



Case Study: Super Prime Residential



Park Modern

Bayswater, London W2

The Brief

Site assembly, funding, design, planning, procurement, build & stakeholder management

Project Overview

57 residences with spa & pool, prime restaurant space and private healthcare facilities across 13 floors

Project Size

200,000 sqft

Funding Development Value

£500 million
(£300 million of investment secured)

Project Completion

Q3-2022



Case Study: Super Prime Residential



Greybrook House

Mayfair, London

Grade II* listed / WCC

The Brief

Extend and refit of a Grade II listed building

Project Overview

4 residences in a 6-storey art deco building

Project Size

Duplex penthouse - 6,500 sqft

3 Apartments - 2,700 sqft each

Development Value

£60 million

Project Completion

2017



Case Study: Super Prime Residential



Eaton Place

Belgravia, London, SW1X

Grade II* listed / WCC / Grosvenor

The Brief

Retrofit & specialist interior design of a Grade II* listed building in WCC

Project Overview

Prime residence with garden apartment and the largest south facing terrace in Belgravia

Project Size

Triplex Penthouse - 6,400 sqft

Development Value

£23 million

Project Completion

2018



Contact Us

Thank you for the opportunity to introduce Fenton Whelan Development Management. We look forward to hearing from you.

JAMES VAN DEN HEULE

Founder / Director

james@fentonwhelan.com

+44 (0) 207 629 2669

COLIN BARTLETT

Development Director

colin@fentonwhelan.com

+44 (0) 207 858 9919

37 Upper Brook Street

London W1K 7PR

fentonwhelan.com

+44 (0) 207 858 9919