

ROKSTONE



Culford Gardens, Chelsea SW3

A beautifully refurbished three bedroom apartment set within a charming red brick mansion block in the heart of Chelsea. The property boasts high ceilings and features direct access to a pretty courtyard for residents to enjoy at the rear. This bright apartment has been meticulously designed throughout by renowned interior designer Fenton Whelan and offers spacious well thought out accommodation. The ground floor comprises a large reception/dining room with a stunning marble hill limestone fireplace as well as bespoke bookcases in American black walnut. The bespoke Rossana kitchen is complete with Miele appliances and a central island perfect for social and practical living. The lower floor consists of a beautiful master bedroom suite complete with dressing area and luxurious en-suite bathroom in polished St Moritz vein marble. There are two further bedroom suites, one offering another entrance leading up to street level, perfect for guests/staff to use.

Price £3,750,000



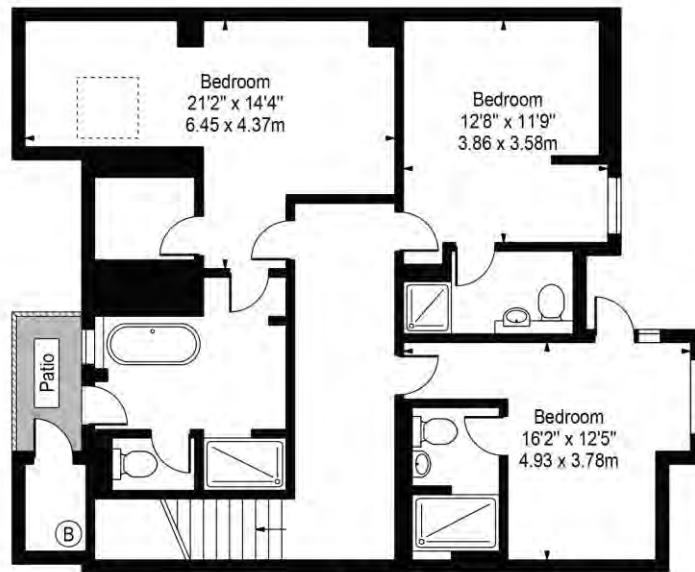
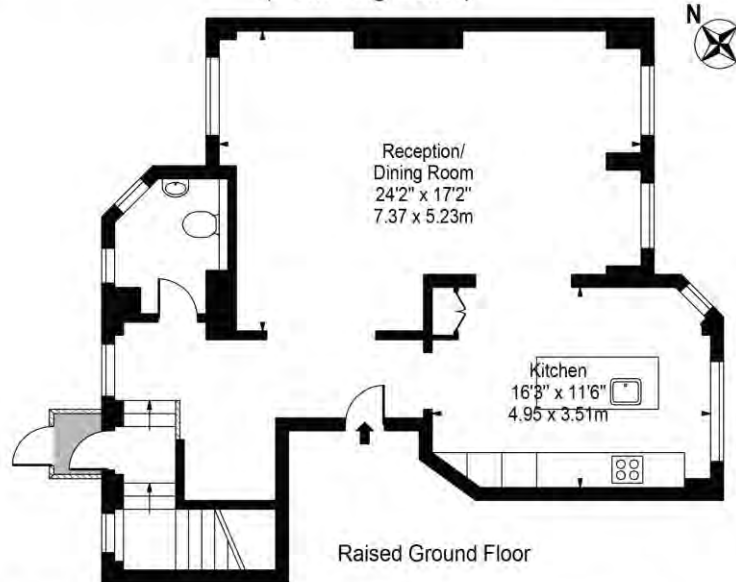
5 Dorset Street London W1U 6QJ
Tel: 020 7580 2030 | Email: enquiries@rokstone.com
www.rokstone.com



THE SUNDAY TIMES
THE SUNDAY TIMES

Culford Gardens

Approx. Gross Internal Area 1750 Sq Ft - 162.58 Sq M
(Excluding Boiler)



For Illustration Purposes Only - Not To Scale

This floor plan should be used as a general outline for guidance only and does not constitute in whole or in part an offer or contract. Any intending purchaser or lessee should satisfy themselves by inspection, searches, enquiries and full survey as to the correctness of each statement. Any areas, measurements or distances quoted are approximate and should not be used to value a property or be the basis of any sale or let.